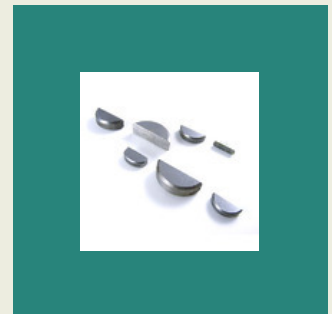


Automatic Industries

www.automaticindustries.in

We are acknowledged as the most promising Manufacturer, Exporter, Trader, and Importer firm specializing in Brass Products and Components. Our product is extensively valued for its efficient performance, compact design, and economical price bands.



Profile

ISO/TS 16949 : 2008

Automatic Industries initiated its industry operations in the year **2011** and maintain a global occupancy as the pioneering Manufacturer, Exporter, Trader, Supplier and Importer firm of next generation Brass Products and Components. Since the beginning, we are **ISO 9001:2008 certified** firm to bring forward a qualitative array of components, such as Brass Turned Parts, Machine Keys, and Woodruff Keys. We bring ahead a best in class range of products that is extensively required for its sturdy construction, excellent finishing, dimensional accuracy, rust-resistant, can be manufactured as per the application requirements.

Our offered products find its credentials in various industries along with automobile, heavy engineering and mineral processing industries. We strive to be the companion of preference across the globe, as we support a focused plan to attain the best company policies. Our endeavors to bring forward impeccable product designs pins our continued efforts to deliver summed benefit to our clients' business. Our modernized R&D gist and infrastructure represent our dedication to nurturing the leading position. We pride ourselves to transcend the prospects of a huge client base, including recognizing patrons from exporting countries of **Germany and Saudi**.

Our mentor **Mr. Shrenik Shah** drives us to create sustainable client benefits. He is well competent with the industrial complexity and leads us to intensify the effectiveness of our production operations.



BRASS TURNED PARTS



Brass Valves



Brass Bush



Brass Turn Buttons



Brass Turned Inserts

WOODRUFF KEYS



Gear Woodruff Keys



Woodruff Keys



Metal Woodruff Keys

SHEET METAL COMPONENTS



Sheet Metal Components



Appliances Sheet Metal Components



Alternator Sheet Metal Components



SS Components

INDUSTRIAL FASTENERS



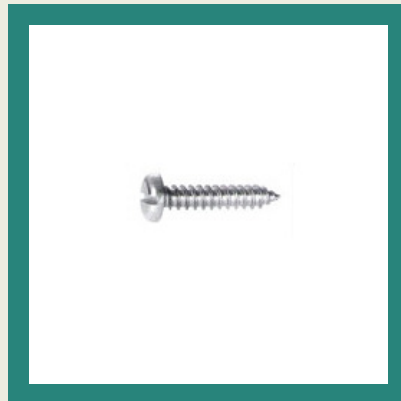
Machine Screws



Socket Products



Hex Head Bolts



Self Drilling Screws

PRECISION TURNED PARTS



Turned Parts



CNC Precision Turned Parts



Precision Turned Parts



Precision Turned Parts

OTHER PRODUCTS:



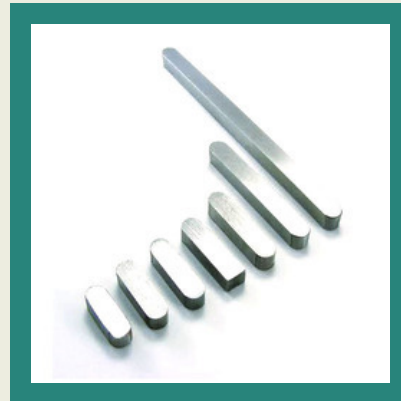
Machine Keys



Dowel Pin

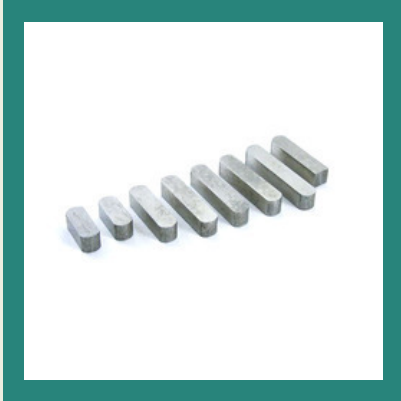


Parallel Keys



Steel Components

OTHER PRODUCTS:



Steel Bars



Textile Machine Components



Precision Turned Machined Components

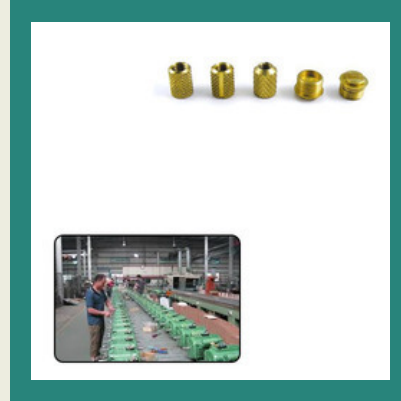


Hex Wrenches

OTHER PRODUCTS:



Textile Machine
Components for Textile
Industry



Brass Turned Inserts for
Electrical Industry



Steel Bars for
Construction Industry

Factsheet

Year of Establishment	1952		
Nature of Business	:	Manufacturer, Exporter, Supplier, Trader, Importer	
Total Number of Employees	:	11 to 25 People	
Primary Competitive Advantage	:	Experienced R & D Department	Good Financial Position & TQM
Contract Manufacturing	:	Large Product Line	Large Production Capacity



CONTACT US

Automatic Industries

Contact Person: Shrenik Shah

B-15, Lucy Industrial Estate, Opposite Professional Courier, Sativali, Vasai East

Thane - 401208, Maharashtra, India



+91-8049471081



www.automaticindustries.in